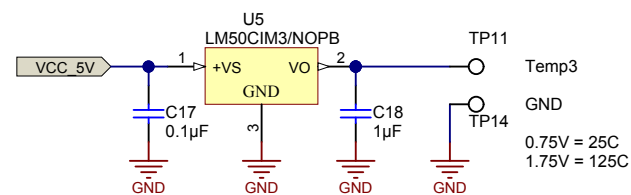
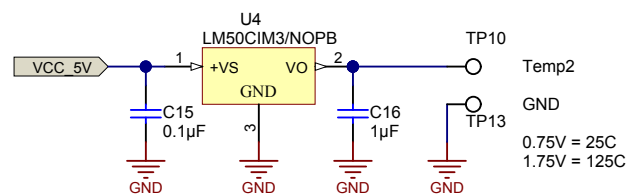
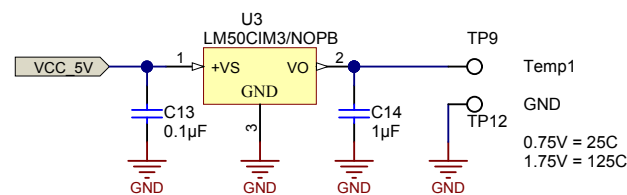
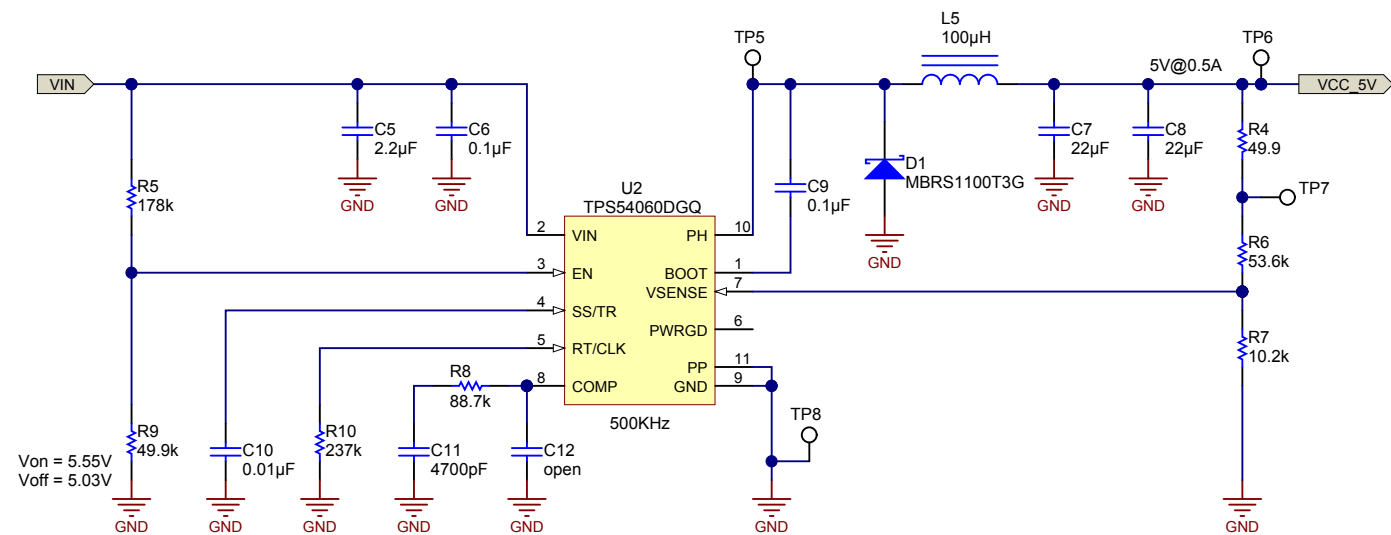
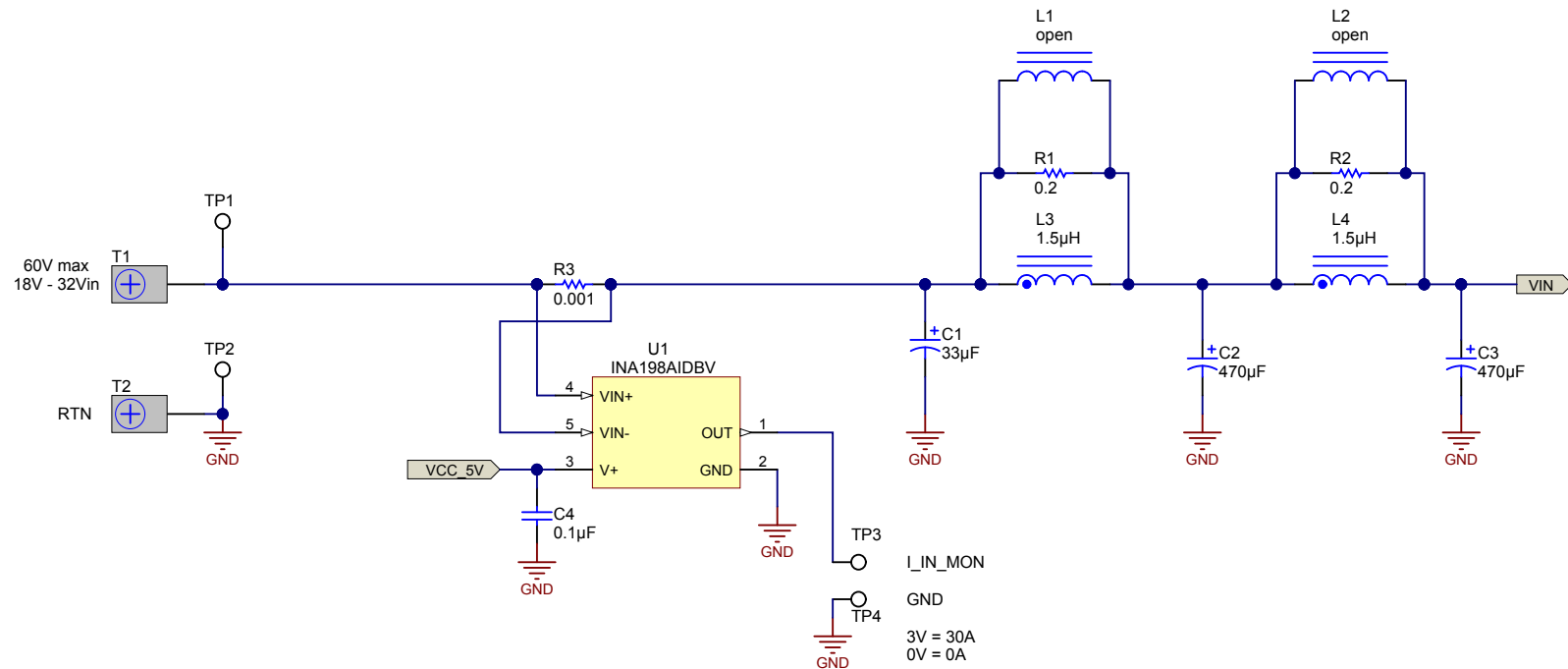
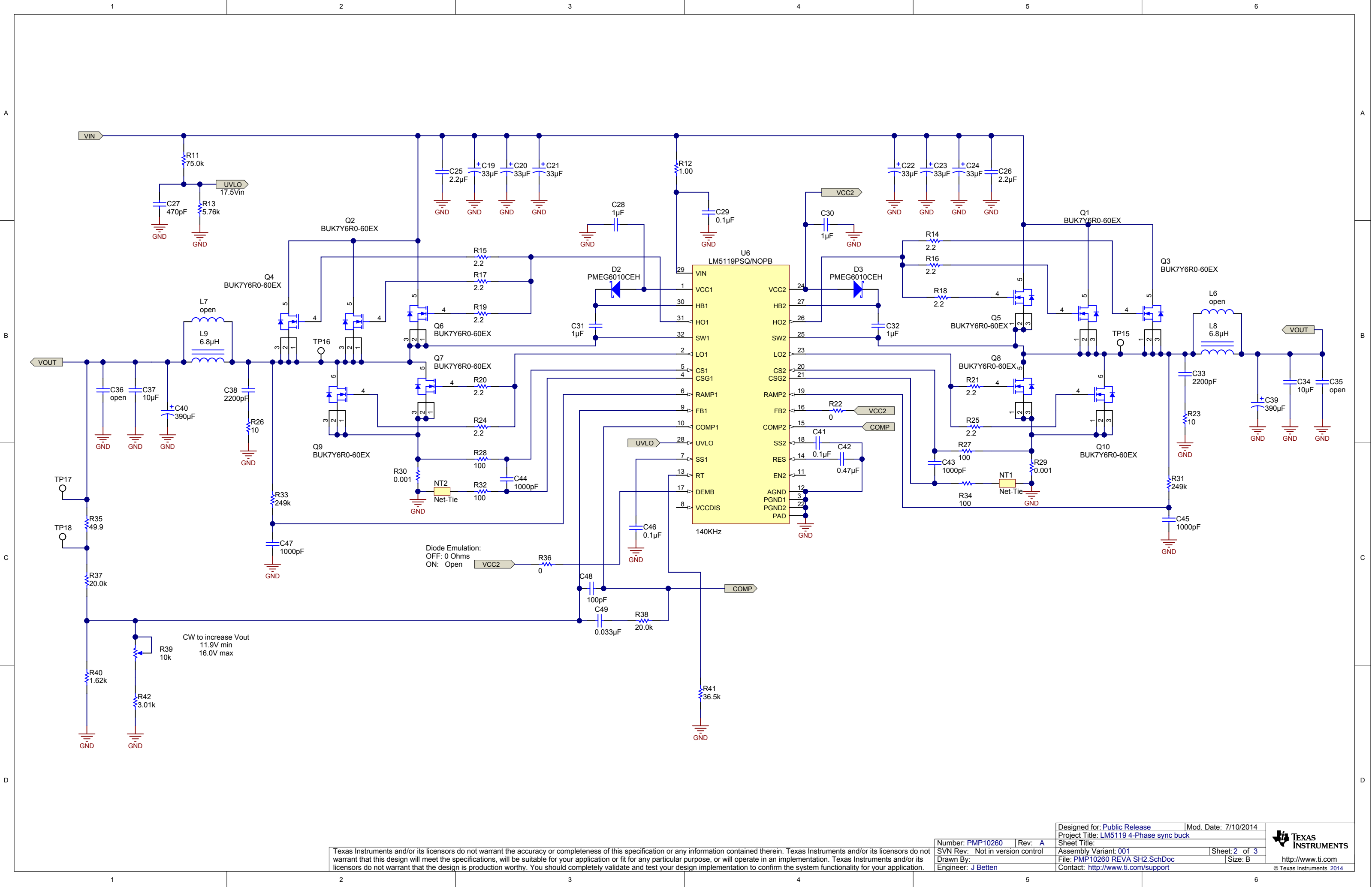


NOTES:
1) Preliminary design only.





Texas Instruments and/or its licensors do not warrant the accuracy or completeness of this specification or any information contained therein. Texas Instruments and/or its licensors do not warrant that this design will meet the specifications, will be suitable for your application or fit for any particular purpose, or will operate in an implementation. Texas Instruments and/or its licensors do not warrant that the design is production worthy. You should completely validate and test your design implementation to confirm the system functionality for your application.

Designed for: Public Release		Mod. Date: 7/10/2014	
Project Title: LM5119 4-Phase sync buck		Rev: A	
Number: PMP10260		Sheet Title:	
SVN Rev: Not in version control		Assembly Variant: 001	
Drawn By:		File: PMP10260 REVA SH2.SchDoc	
Engineer: J Betten		Size: B	
		Contact: http://www.ti.com/support	

A

A

B

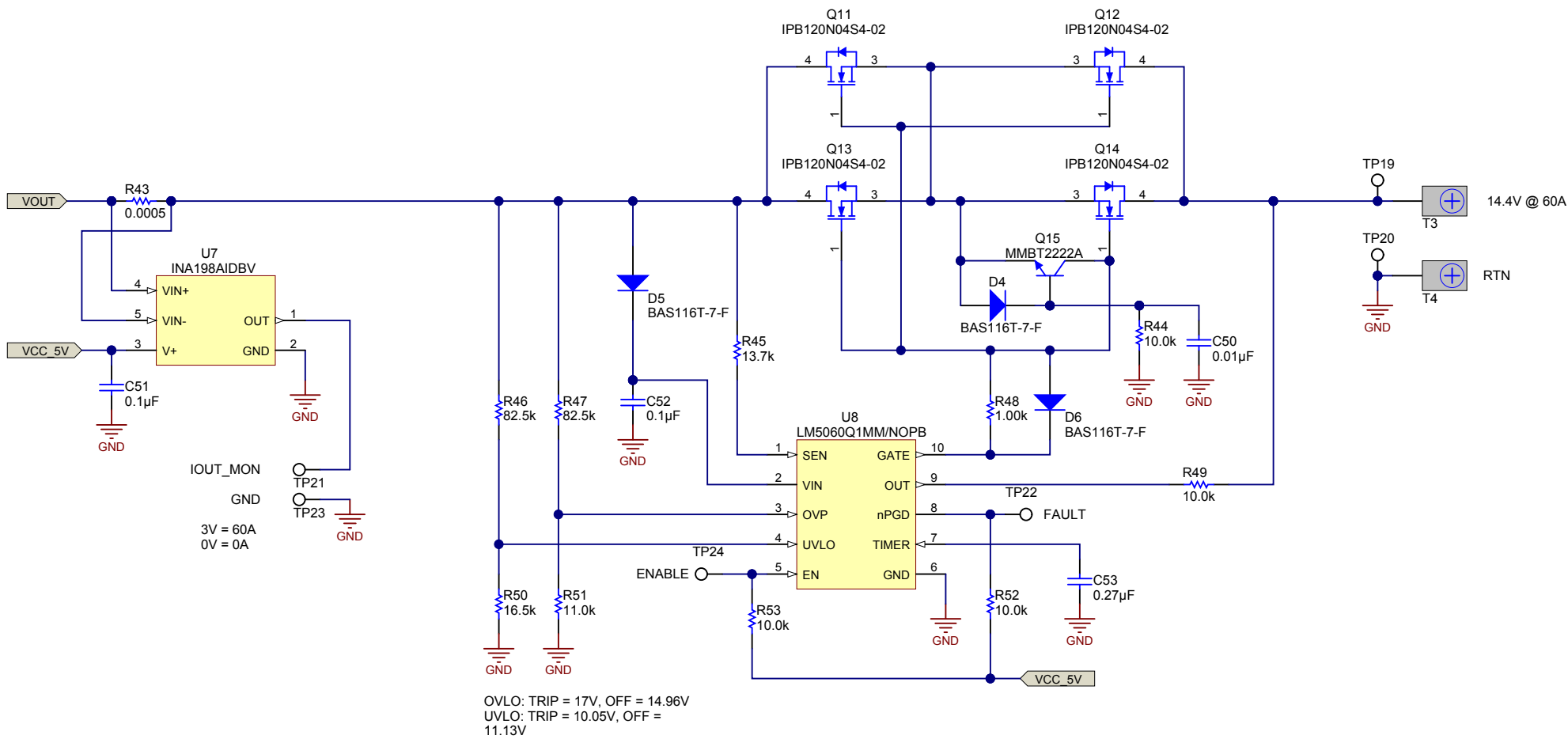
B

C

C

D

D



Texas Instruments and/or its licensors do not warrant the accuracy or completeness of this specification or any information contained therein. Texas Instruments and/or its licensors do not warrant that this design will meet the specifications, will be suitable for your application or fit for any particular purpose, or will operate in an implementation. Texas Instruments and/or its licensors do not warrant that the design is production worthy. You should completely validate and test your design implementation to confirm the system functionality for your application.